



# 222 The Esplanade, Unit 320

St. Lawrence Toronto ON M5A 4M8



## Details:

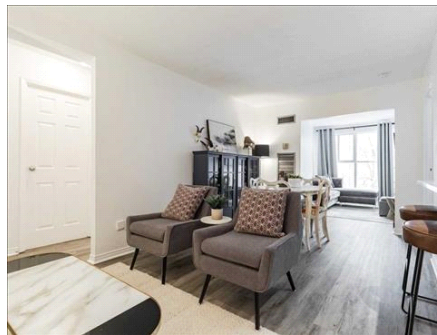
List Price: \$589,000  
Sq Ft: 800-899  
Bedrooms: 2 + 1  
Bathrooms: 1  
Building Type: Condo  
Style: Condo Apt  
Storeys: 1  
Exterior Finish: Concrete  
Land Size: n/a  
Basement: None  
Heating: Forced Air Gas

## General Description:

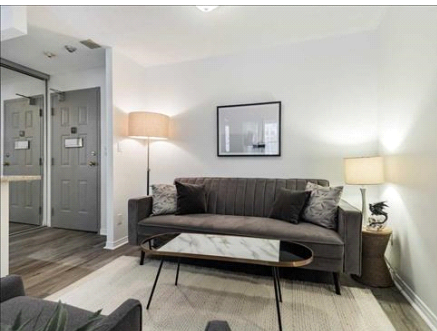
The Heart Has Its Reasons That Reason Does Not Know But I Know That This Sweet Easy Living Condo Is About To Capture Your Attention And Steal Your Heart. Updated And Renovated 2 Bedroom Plus Den Beauty With Spacious Bedrooms Master With Walk In Closet Open Plan Living Dining Plus Den Beautiful Modern Chefs Kitchen Unobstructed South Facing Views Of The Park.

The Heart Wants What The Heart Wants And This Turn Key Home Is Top Of That List. Outstanding Location!

St Lawrence Market Entertainment District Amazing Shopping & Restaurants Get Anywhere Easily W Transit Links Easy Highway Access Fabulous Building Amenities 24-Hour Security Whirlpool/Sauna Gym Don't Blame Me Or Gravity For Falling In Love



## Visit web site:



Want to book a home viewing?  
Call (416) 937-2731